



Lumber River Village

**TOTAL VISITORS
100K
(12 MONTHS)**

Lumberton, located in Robeson County, not only serves as the county seat but also boasts a thriving hub for national retailers. With renowned brands like Dollar Tree, Pizza Hut, Rent-A-Center, and Subway, this bustling center is anchored by the leading market player, Food Lion. What truly sets this center apart is its remarkable visit frequency, surpassing the average at an impressive 5.48.

OVERVIEW

2779 W. 5th Street
Lumberton, NC 28358

For Lease
Type: Retail
Total SF: 66,701

RETAILERS INCLUDE



LEASING ASSOCIATE



Kevin Conway
Sr. Leasing Manager
(757) 618-5932
kconway@whlr.us

DEMOGRAPHICS

	3 MILES	5 MILES	10 MILES
POPULATION	15,837	33,610	72,436
HOUSEHOLDS	5,337	11,433	24,745
AVG. HH INCOME (\$)	\$51,094	\$54,528	\$52,197
MEDIAN AGE	36	35	35

Lumber River Village

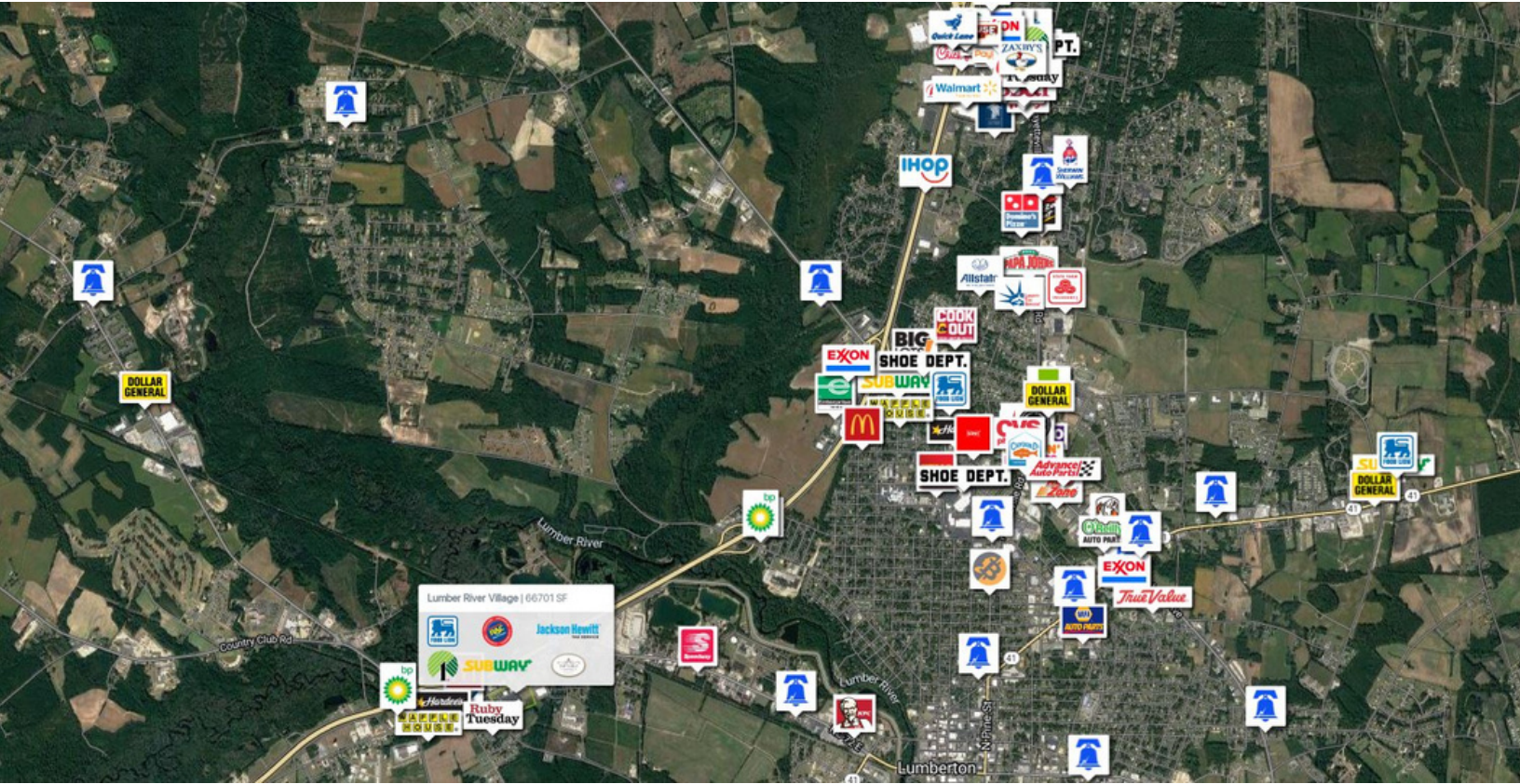
2779 W. 5th Street
Lumberton, NC 28358



SUITE	TENANTS	S.F.
A	Dollar Tree	8,001
B	Little China	1,800
C	Rent-A-Center	4,200
D	Pizza Hut	1,200
E	Top Nails	1,200
F	Missy Beauty Supply	9,100
G	Food Lion	30,280
H/I	Pawn Plus	6,120
J	Subway	1,200
K	Jackson Hewitt	1,200
L/M	Express & Discount Tobacco	2,400

Lumber River Village

2779 W. 5th Street
Lumberton, NC 28358



AADT: 15,905 (NC Hwy 72)

AADT: 31,451 (I-95)

Avg. Hourly Traffic: 662 (NC Hwy 72)

Avg. Hourly Traffic: 1,310 (I-95)

DISCLAIMER

The information contained herein has been obtained from sources we believe to be reliable; however, we have not investigated nor verified any information and make no guarantee, warranty or representation to the accuracy or completeness of information. By accepting this Marketing Brochure, you agree to release Wheeler Real Estate Company and WHLR and hold it harmless from any kind of claim, cost, expense, or liability arising out of your investigation and/or lease of this property. This Marketing Brochure and offering is subject to correction or errors and omissions, change of price, prior to sale/lease or withdrawal from the market, without notice.

WHLR

WHEELER REAL ESTATE COMPANY
a subsidiary of Wheeler Real Estate Investment Trust