



**COMING SOON!**

# Lake Murray Center

**TOTAL VISITORS**  
57.8K  
(12 MONTHS)

## OVERVIEW

760 Highway 378  
Lexington, SC 29072

**For Lease**  
**Type:** Retail  
**Total SF:** 39,218

We are thrilled to present you with an incredible opportunity at our center—a spacious anchor space of 33.2K SF. This prime location attracts a steady stream of commuters heading to the bustling commercial areas of Lexington and even downtown Columbia, just 12 miles to the east. The stunning Lake Murray to the north, boasting over 500 miles of picturesque shoreline, draws in a significant amount of year-round recreational traffic. What sets this center apart is its exceptional visit frequency of 3.16 visits per customer, reflecting the unwavering loyalty of our valued patrons.

## RETAILERS INCLUDE



## LEASING ASSOCIATE



**Kevin Conway**  
*Sr. Leasing Manager*  
(757) 618-5932  
kconway@whlr.us

### DEMOGRAPHICS

	3 MILES	5 MILES	10 MILES
POPULATION	21,038	44,660	179,745
HOUSEHOLDS	7,801	16,103	67,535
AVG. HH INCOME (\$)	\$109,143	\$104,206	\$93,655
MEDIAN AGE	39	38	39

# Lake Murray Center

760 Highway 378  
Lexington, SC 29072

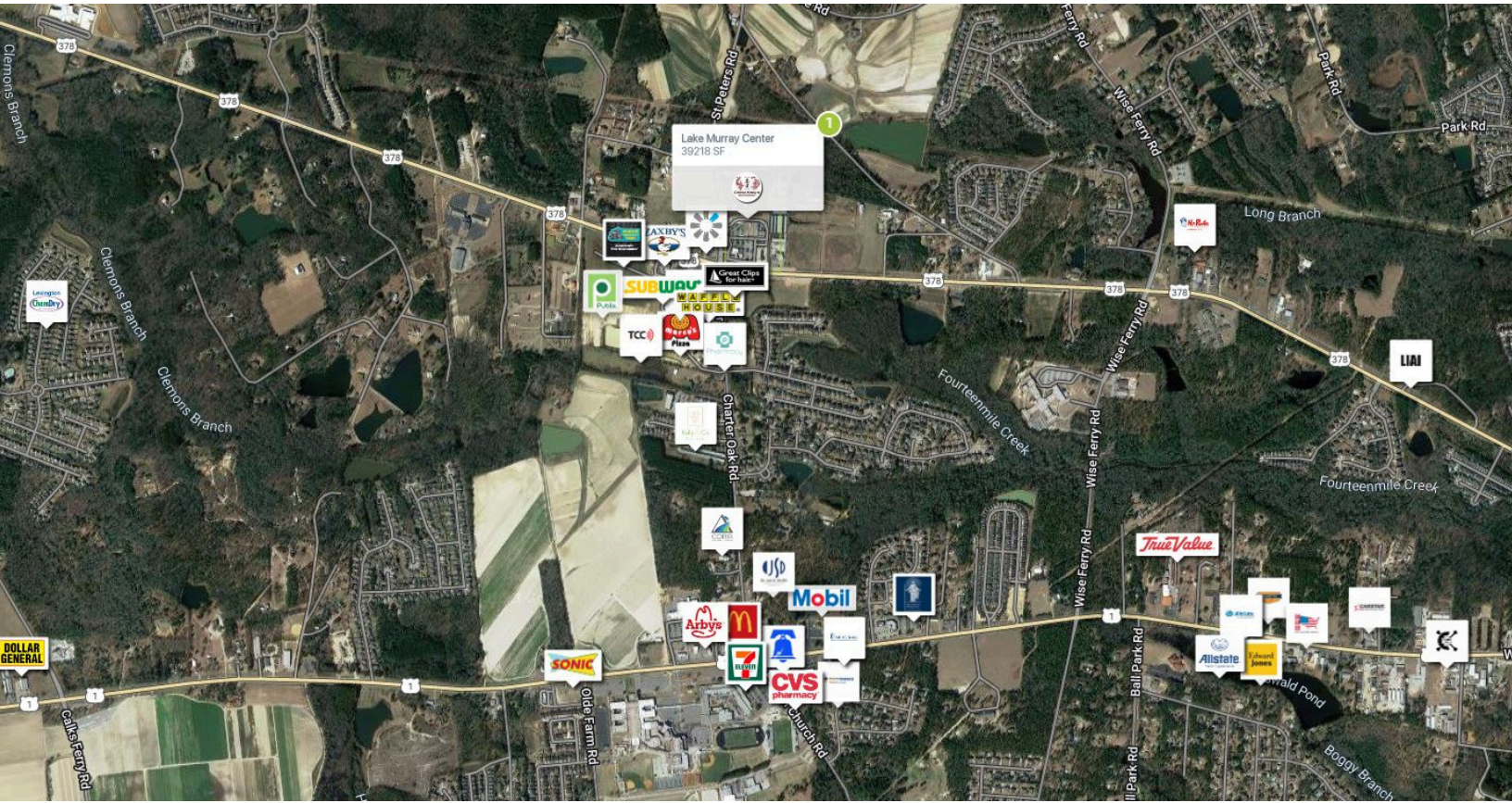


SUITE	TENANTS	S.F.
Anchor	Panet Fitness	33,218
A & B	Ramblin' Mule Restaurant	2,400
C	L. Murray Liquors	1,200
D	China King	1,200
E	Lexington Tobacco & Vapor	1,200



# Lake Murray Center

760 Highway 378  
Lexington, SC 29072



**AADT: 13,603 (US Hwy 378)**

**Avg. Hourly Traffic: 566 (US Hwy 378)**

#### DISCLAIMER

The information contained herein has been obtained from sources we believe to be reliable; however, we have not investigated nor verified any information and make no guarantee, warranty or representation to the accuracy or completeness of information. By accepting this Marketing Brochure, you agree to release Wheeler Real Estate Company and WHLR and hold it harmless from any kind of claim, cost, expense, or liability arising out of your investigation and/or lease of this property. This Marketing Brochure and offering is subject to correction or errors and omissions, change of price, prior to sale/lease or withdrawal from the market, without notice.