



Devine Street Center

TOTAL VISITORS
61.9K
(12 MONTHS)

Devine Street serves as a vital artery, seamlessly connecting the heart of downtown and the university to the vibrant surrounding neighborhoods. For over four decades, Devine has been an unwavering beacon, drawing in a steady stream of visitors. With an impressive visit frequency of 3.21, this center exudes confidence in its unwavering dedication to nurturing and retaining its most cherished customers.

OVERVIEW

3818 Devine Street
Columbia, SC 29205

For Lease
Type: Retail
Total SF: 38,464

RETAILERS INCLUDE

LEASING ASSOCIATE

DEMOGRAPHICS

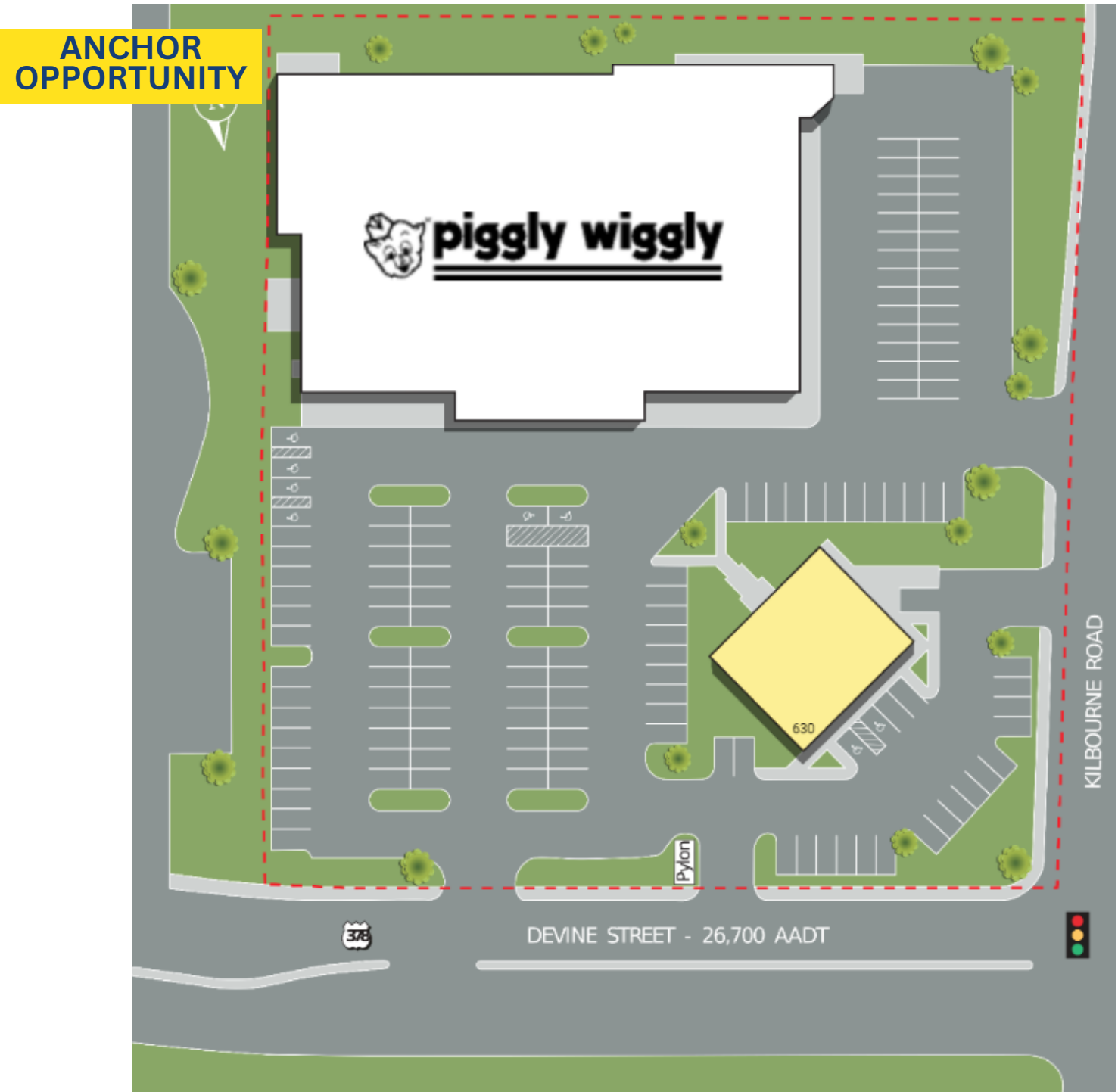
	3 MILES	5 MILES	10 MILES
POPULATION	8,293	16,546	26,254
HOUSEHOLDS	3,163	6,389	10,406
AVG. HH INCOME (\$)	\$46,910	\$54,100	\$58,616
MEDIAN AGE	38	39	45



Raymond Hicks
Sr. Leasing Manager
(757) 434-1168
rhicks@whlr.us

Devine Street Center

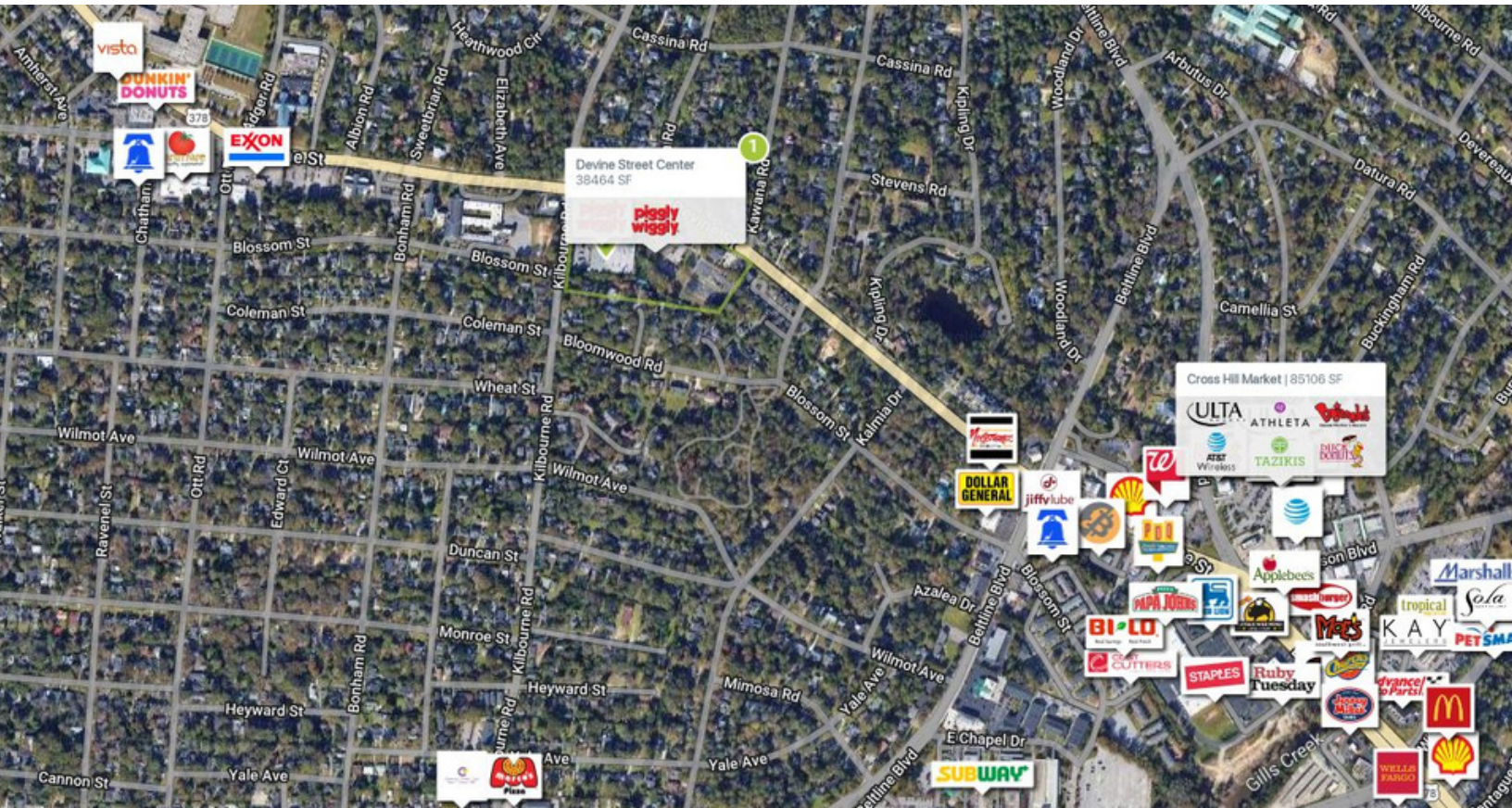
3818 Devine Street
Columbia, SC 29205



SUITE	TENANTS	S.F.
Anchor	Piggly Wiggly	34,264
630	AVAILABLE	4,200

Devine Street Center

3818 Devine Street
Columbia, SC 29205



AADT: 23,054 (Devine Street)

Avg. Hourly Traffic: 960 (Devine Street)

DISCLAIMER

The information contained herein has been obtained from sources we believe to be reliable; however, we have not investigated nor verified any information and make no guarantee, warranty or representation to the accuracy or completeness of information. By accepting this Marketing Brochure, you agree to release Wheeler Real Estate Company and WHLR and hold it harmless from any kind of claim, cost, expense, or liability arising out of your investigation and/or lease of this property. This Marketing Brochure and offering is subject to correction or errors and omissions, change of price, prior to sale/lease or withdrawal from the market, without notice.

WHLR

WHEELER REAL ESTATE COMPANY
a subsidiary of Wheeler Real Estate Investment Trust